

ILLUSTRATED PARTS BREAKDOWN

640QS PEDESTAL SYSTEM

HOW TO USE THE IPB

GENERAL

This IPB is compiled following the organization and nomenclature of the engineering drawing structure.

MAJOR ASSEMBLY LOCATOR (When Applicable)

The Major Assembly Locator (first illustration) is an index that provides a description and a figure reference for all illustrations used in this manual.

INDENTED PARTS LIST

This manual identifies each assembly being broken down (figure reference callout), and all parts of that assembly. Further breakdown of an assembly is shown by an asterisk (*) preceding the item callouts in the Description Column. The number of asterisks preceding an item is used to denote the subordination of that item with respect to the Major Assembly. A single asterisk preceding an item description indicates that the item is part of the major assembly being illustrated. Items that are subordinate to single asterisks items, are denoted by two asterisks (**) and immediately follow the related single asterisk item. This system of part identification provides a means for the user to identify the next higher assembly item and make alternate selections for parts when the required replacement part of assembly is not immediately available.

COLUMN CALLOUT DESCRIPTION

Figure and Item - Indicates the figure number and item number of each part.

Description - Lists the name of the part and pertinent specifications (when required). Asterisks preceding the description denote the subordination of the part to the next higher assembly.

DEC Part No. - Lists the Digital part ordering number. A blank in this column indicates a Digital part number was not assigned at the time of publication.

ECO Cut-In - The notation at the top of this column indicates the ECO level of the system (option), at which the IPB was initially prepared. Subsequent ECO level designations, that modify existing parts or add new parts to the device, are inserted in the ECO Cut-In column next to the part that is added or modified.

Used On Code - Letters in this column correspond to the variation codes assigned in Figure 1. Parts with an Alpha notation(s) are used only in those option variations. A blank indicates that the part is used on all option variations.

Ref Fig No. - A cross reference between illustrations. For each Major Assembly, the number in this column denotes the figure of the next higher assembly. For all subassemblies, the number in this column denotes the figure showing additional detailed breakdown.

PART NUMBER/PART DESCRIPTION INDEX SECTION
Parts are indexed both numerically and alphabetically by description, referenced to a location within the IPB, by figure number and item number.

REVISION HISTORY

PRINTING	ECO LEVEL			DATE	OTHER IPB MANUALS REFERENCED
2nd Printing	640QS	00000-00003		28-MAR-91	EK-BA213-IP
	70-25775	00000-00007			
	70-24046	00001-00002			
	70-24037	00001-00004			
	70-24041	00000-00002			

Digital Equipment Corporation reserves the right, without notice, to make substitutions and modifications in the specifications of products documented in this manual and further reserves the right to withdraw any of these products from the market without notice.

Digital Equipment Corporation is not responsible for errors which may appear in the technical description (including illustrations and photographs) of the products covered by this manual.

None of the descriptions contained in this manual imply the granting of any license whatsoever to make, use or sell equipment constructed in accordance therewith.

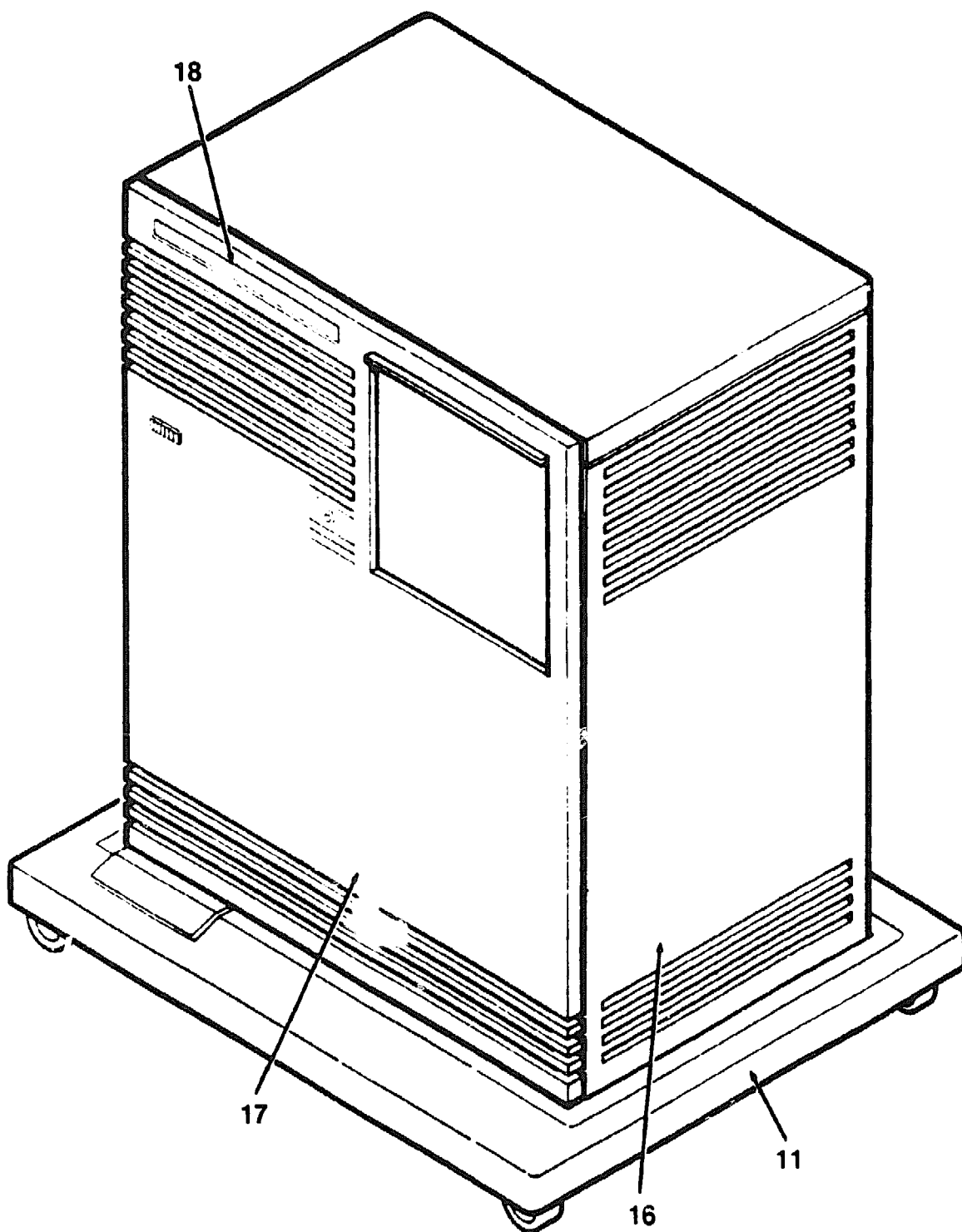
Restricted Rights: Use, duplication or disclosure by the U.S. Government is subject to restrictions as set forth in subparagraph (c) (1) (ii) of the Rights in Technical Data and Computer Software clause at DFARS 252.227-2713.

Copyright © 1988, 1991 by Digital Equipment Corporation. All rights reserved.
Printed in U.S.A.

The postage-paid READER'S COMMENTS form on the last page of this document requests your critical evaluation to assist us in preparing future documentation.

The following are trademarks of Digital Equipment Corporation :

BA200, DECdirect, MicroVAX, Q-bus, rtVAX, TK, VAXserver and the DIGITAL logo.

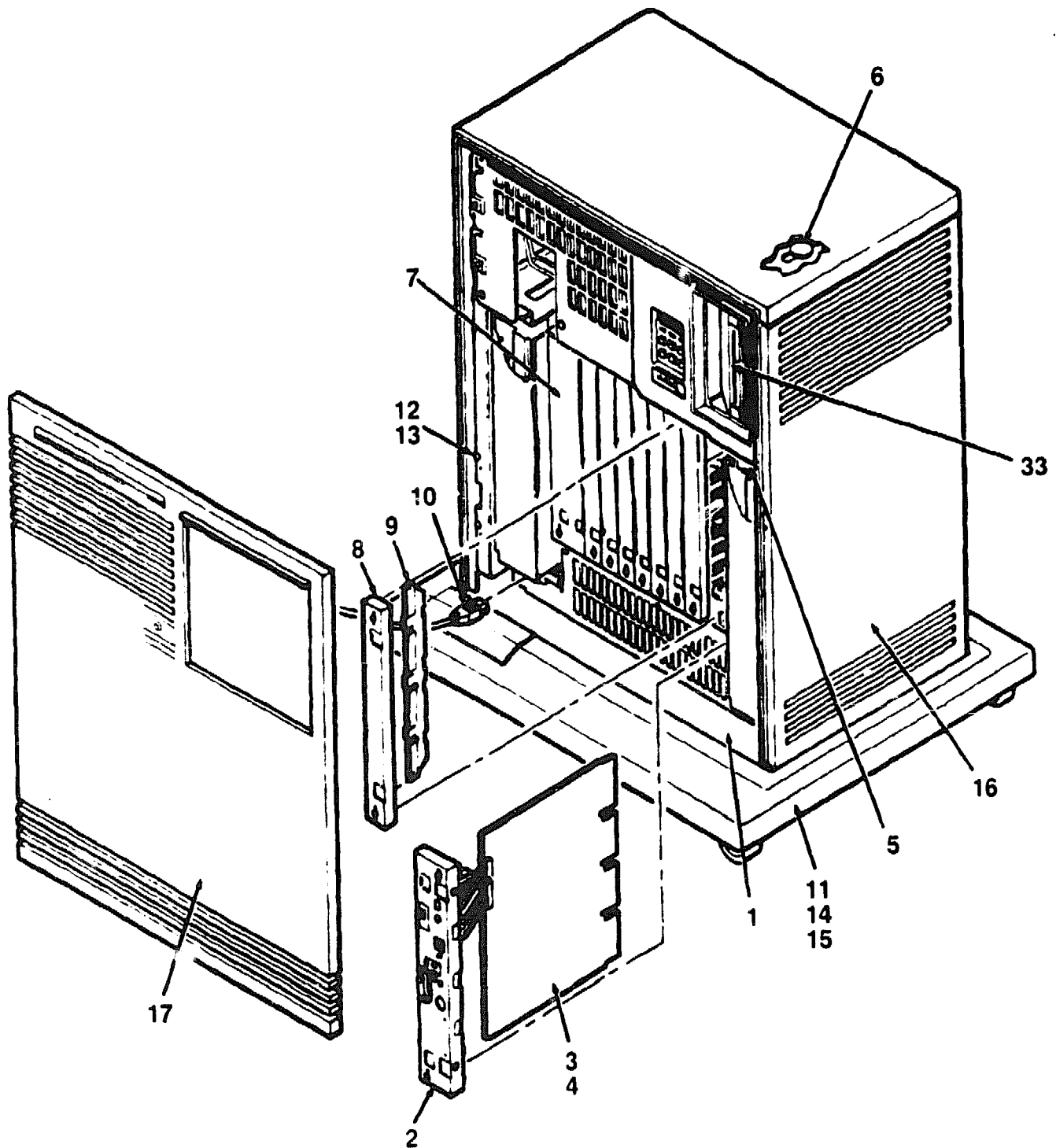


640QS-01-SC

Figure 1. 640QS Pedestal System (Sheet 1 of 3)

PARTS LIST

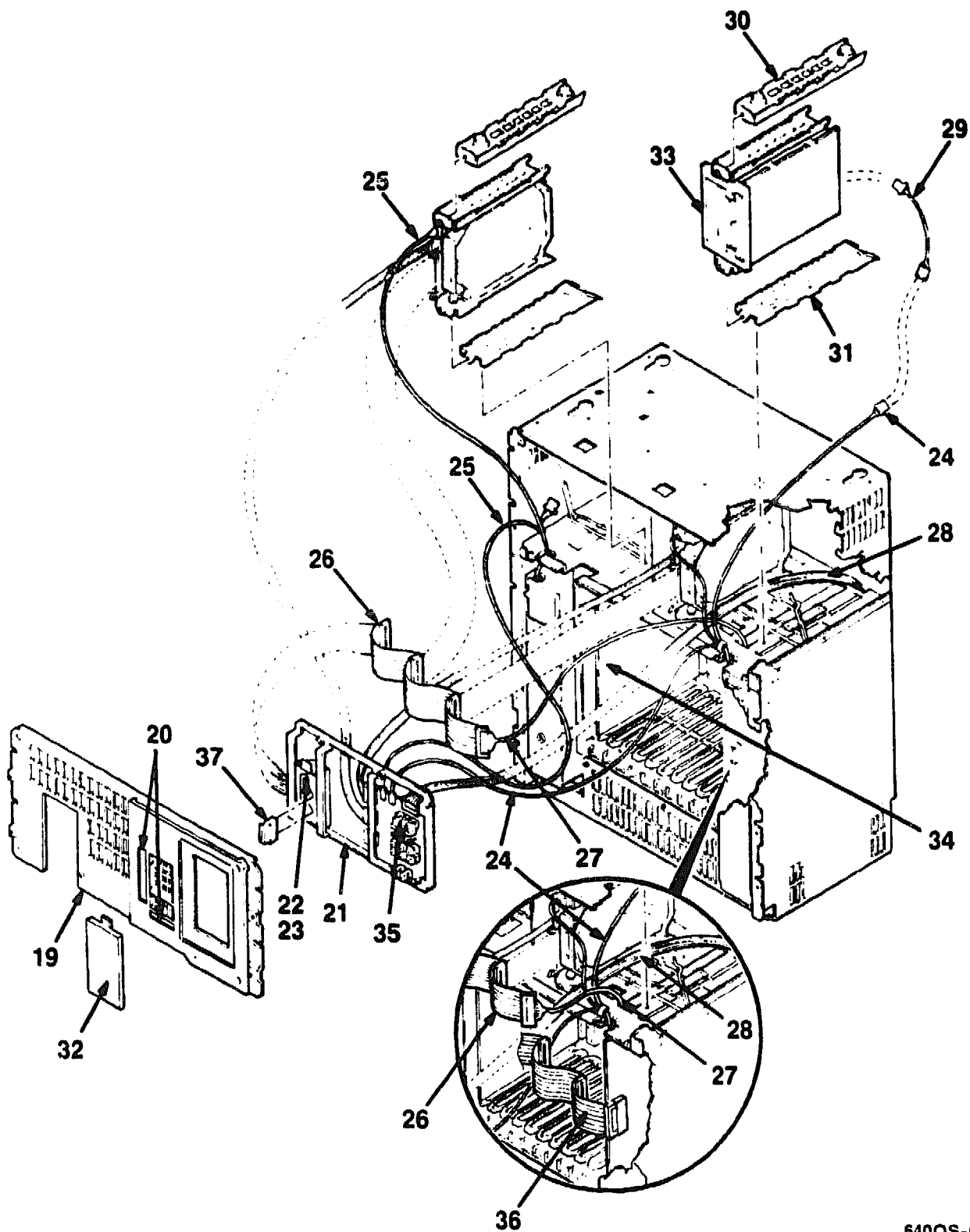




640QS-01A-SC

Figure 1. 640QS Pedestal System (Sheet 2 of 3)

PARTS LIST



640QS-01B-SC

Figure 1. 640QS Pedestal System (Sheet 3 of 3)

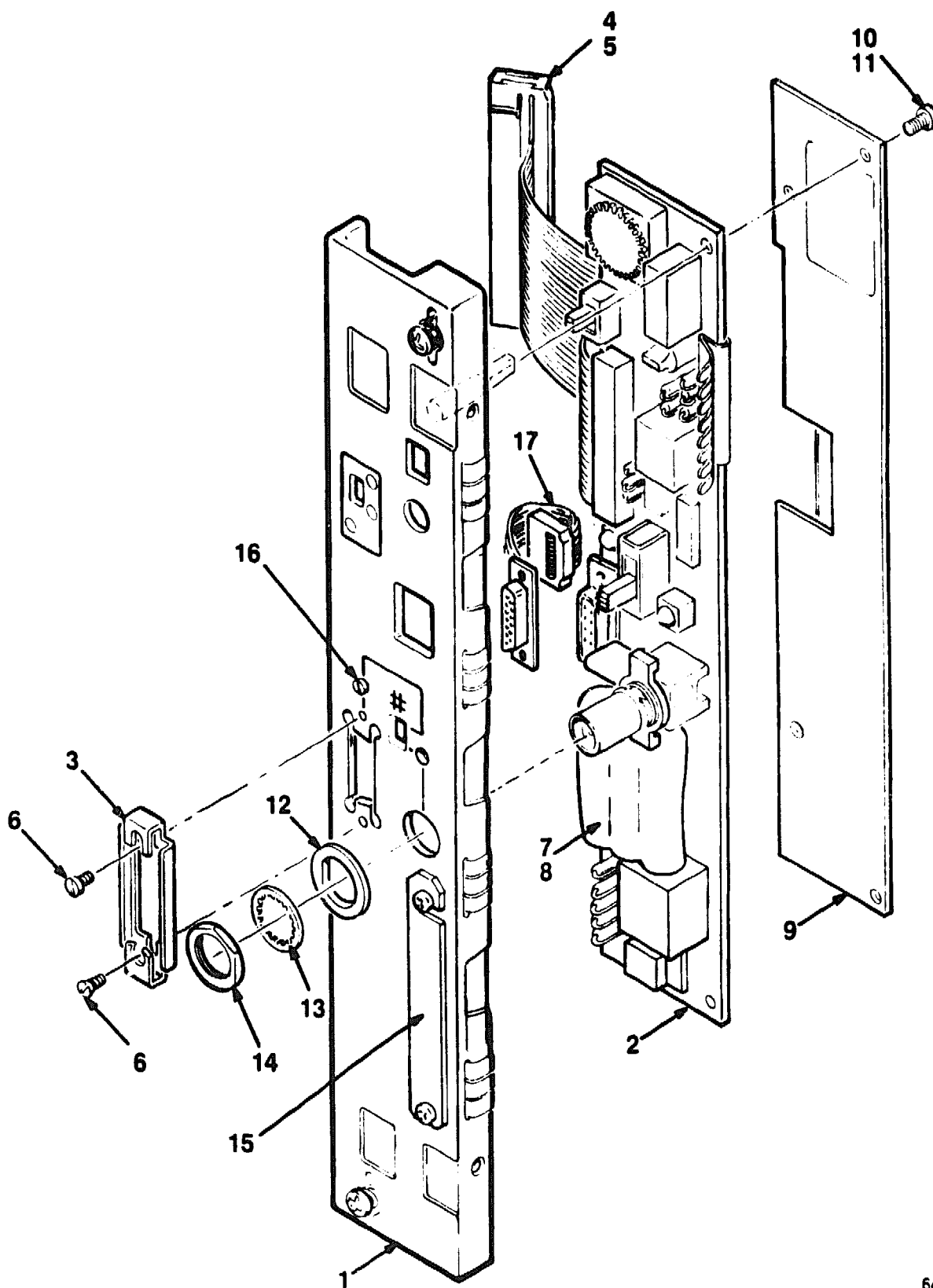
FIG.& ITEM NO.	DESCRIPTION	DEC PART NO.	ECO CUT-IN 640QS 00000	USED ON CODE	REF FIG NO.
1-	640QS PEDESTAL SYSTEM				
	Code A-Used on 640QS-A2 120V (w/o Skins) (TIMESHARE)	640QS-A2		A	
	Code B-Used on 640QS-A3 240V (w/o Skins) (TIMESHARE)	640QS-A3		B	
	Code C-Used on 640QS-B2 120V (w/Skins) (TIMESHARE)	640QS-B2		C	
	Code D-Used on 640QS-B3 240V (w/Skins) (TIMESHARE)	640QS-B3		D	
	Code E-Used on 640QS-C2 120V (w/o Skins, Rack Kit) (TIMESHARE)	640QS-C2		E	
	Code F-Used on 640QS-C3 240V (w/o Skins, Rack Kit) (TIMESHARE)	640QS-C3		F	
	Code G-Used on 640QS-D2 120V (w/o Skins, Wall Kit) (TIMESHARE)	640QS-D2		G	
	Code H-Used on 640QS-D3 240V (w/o Skins, Wall Kit) (TIMESHARE)	640QS-D3		H	
	Code J-Used on 640QS-E2 120V (w/o Skins) (SERVER)	640QS-E2		J	
	Code K-Used on 640QS-E3 240V (w/o Skins) (SERVER)	640QS-E3		K	
	Code L-Used on 640QS-F2 120V (w/Skins) (SERVER)	640QS-F2		L	
	Code M-Used on 640QS-F3 240V (w/Skins) (SERVER)	640QS-F3		M	
	Code N-Used on 640QS-H2 120V (w/o Skins, Rack Kit) (SERVER)	640QS-H2		N	
	Code P-Used on 640QS-H3 240V (w/o Skins, Rack Kit) (SERVER)	640QS-H3		P	
	Code Q-Used on 640QS-J2 120V (w/o Skins, Wall Kit) (SERVER)	640QS-J2		Q	
	Code R-Used on 640QS-J3 240V (w/o Skins, Wall Kit) (SERVER)	640QS-J3		R	
1	*BA213 UNIT ASSEMBLY 120V (2 P.S.) (See IPB Manual EK-BA213-IP)	70-24227-03		ACEG JLNQ	
	*BA213 UNIT ASSEMBLY 240V (2 P.S.) (See IPB Manual EK-BA213-IP)	70-24227-04		BDFH KMPR	
2	*MODULE ASSEMBLY, H3602 BULKHEAD	70-25775-01			2
3	*Module, Mayfair II CPU (Replaces M7624-AA)	M7624-CA	00001	A-H	
4	*Module, Mayfair II CPU (Replaces M7624-BA)	M7624-DA	00001	J-R	
5	*Frame, Switch	74-35417-01		CDLM	

FIG. & ITEM NO.	DESCRIPTION	DEC PART NO.	ECO CUT-IN 840QS 00000	USED ON CODE	REF FIG NO.
1- 6	*Plug, Button	90-07064-00		ABEF GHJK NPQR	
7	*Bulkhead Assembly, Front Dual	70-23982-02			
8	*Bulkhead Assembly, Front	70-23981-01			
9	*Panel Assembly, Gap Filler	70-24071-01			
10	*Cord, Power	17-00083-43		ACEG JLNQ	
11	*BASE ASSEMBLY	70-24048-01		CDLM	3
12	*Screw, Self Tap Phi Pan Hd No. 6 x 1/2	90-09800-08		CDLM	
13	*Washer, Flat	90-06861-00		CDLM	
14	*Screw, Sems Phi Pan Hd No. 10-32 x 15/16	90-09282-00		CDLM	
15	*Fastener, Turn	74-33854-01		CDLM	
16	*ENCLOSURE ASSEMBLY, SHELL	70-24037-01		CDLM	4
17	*PANEL ASSEMBLY, FRONT	70-24041-01		CDLM	5
18	*Nameplate, MicroVAX 3400	74-34425-16		CD	
	*Nameplate, VAXserver 3400	74-34425-17		LM	
	*Nameplate, rtVAX 3400	74-34425-22		LM	
19	*Panel Assembly, Front (DSSI)	70-25750-01			
20	*Label, "Control Panel"	36-29341-01			
21	*OCP Assembly	70-25752-01			
22	*Plate Assembly, Connector	70-26206-01			
23	*Screw, Mach Flat Hd (Metric) 02.5 x .08	90-10917-01			
24	*Harness Assembly, Right Power	17-01990-01			
25	*Harness Assembly, Left Power	17-01989-01			
26	*Cable Assembly, Flat Ribbon, 50-Pin Daisy Chain	17-01836-01			
27	*Cable Assembly, Round, 50 Conductor	17-02059-01			
28	*Cable Assembly, Flat Ribbon, 10 Conductor	17-01964-01			
29	*Cable Assembly, TK Power 5-Pin to 4-Pin (Connects to Tape Drive)	17-01937-01			
30	*Shock Assembly, Top (See Note)	70-25452-03			
31	*Shock Assembly, Bottom (See Note)	70-25452-04			
32	*Filler, Tape Drive (See Note)	74-36425-01			
33	*Drive, TKXX Tape	TKXX-XX			
34	*Module, Load	M9060-YA			
35	*Lens Encoder Set	12-28766-19			
36	*Cable, Flat Ribbon, 50 Cond, 3 Connector	17-01898-01			
	*Cable, Flat Ribbon, 50 Cond, 4 Connector	17-01898-02			
37	*Connector, Terminator	12-29258-01			
	NOTE: Items 30, 31 and 32, to be installed when no Tape Drive is used.				

FIG.& ITEM NO.	DESCRIPTION	DEC PART NO.	ECO CUT-IN 640QS 00000	USED ON CODE	REF FIG NO.
1-	KITS (Not Shown)				
	*KIT, RACK MOUNT KIT BA213 LARGE S-BOX	BA213-RA		EFNP	
	**Guide, Rack Mount Installation	EK-BA200-IN			
	**Hardware, Rack Mount	70-24263-02			
	***Support, Mounting	74-34638-01			
	***Screw, Sems Phl Pan Hd No.10-32 x 1/2	90-09700-00			
	***U-Nut, Retainer	90-07786-00			
	*KIT, WALL MOUNT BA213 LARGE S-BOX	BA213-WA		GHQR	
	**Guide, Wall Mount Installation	EK-BA200-IN			
	**Hardware, Wall Mount	70-24263-01			
	**Bracket, Wall Mount	74-34432-01			
	***Screw, Sems Phl Pan Hd No. 10-32 x 3/8	90-09228-10			
	*KIT, ACCESSORY	70-25760-01		AEGJNQ	
	**Cable Assembly, 06 Conductor	17-00811-03			
	**Screwdriver, Flat Blade	47-00042-00			
	**Label, "S-Box, Module Utilization"	36-27923-01			
	**Label, "S-Box, Module Utilization"	36-27923-02			
	**Label, "BA2XX Rev"	36-29164-07			
	**Tee, BNC Coaxial	12-25869-01			
	**Connector, BNC Coaxial	12-26318-01			
	**Connector, 25-Position to 6-Position Adapter	12-23599-01			
	*KIT, ACCESSORY	70-25760-02		CL	
	**Cable Assembly, 06 Conductor	17-00811-03			
	**Key, Plastic	12-17119-01			
	**Screwdriver, Flat Blade	47-00042-00			
	**Label, "S-Box, Module Utilization"	36-27923-01			
	**Label, "S-Box, Module Utilization"	36-27923-02			
	**Label, "BA2XX Rev"	36-29164-07			
	**Tee, BNC Coaxial	12-25869-01			
	**Connector, BNC Coaxial	12-26318-01			
	**Connector, 25-Position to 6-Position Adapter	12-23599-01			

FIG.& ITEM NO.	DESCRIPTION	DEC PART NO.	ECO CUT-IN 640QS 00000	USED ON CODE	REF FIG NO.
1-	*KIT, ACCESSORY **Cable Assembly, 06 Conductor **Screwdriver, Flat Blade **Label, "S-Box, Module Utilization" **Label, "S-Box, Module Utilization" **Label, "BA2XX Rev" **Tee, BNC Coaxial **Connector, BNC Coaxial **Connector, 25-Position to 6-Position Adapter	70-25760-03 17-01364-02 47-00042-00 36-27923-01 36-27923-02 36-29164-07 12-25869-01 12-26318-01 12-23599-01		BFHKPR	
	*KIT, ACCESSORY **Cable Assembly, 06 Conductor **Key, Plastic **Screwdriver, Flat Blade **Label, "S-Box, Module Utilization" **Label, "S-Box, Module Utilization" **Label, "BA2XX Rev" **Tee, BNC Coaxial **Connector, BNC Coaxial **Connector, 25-Position to 6-Position Adapter	70-25760-04 17-01364-02 12-17119-01 47-00042-00 36-27923-01 36-27923-02 36-29164-07 12-25869-01 12-26318-01 12-23599-01		DM	
	*KIT, Q-BUS GRANT CONTINUITY **Card, Q-Bus Grant Continuity **Panel, Blank Dual **Kit, Bulkhead Panel **Kit, Bulkhead Panel **Label, "Module Numbers"	M9047-SA M9047-00 74-33507-01 74-24505-01 74-24505-02 36-26883-18			
	LABELS (Not Shown)				
	*Label, "Module Number, M7624-AA" (deleted)	36-26883-55	00004	A-H	
	*Label, "Module Number, KA640-BA" (deleted)	36-26883-69	00004	J-R	
	*Label, "Warning Equipment Rating 100-120V"	36-17905-16		ACEG	
				JLNQ	
	*Label, "Warning Equipment Rating 220-220V"	36-17905-17		BDFH	
				KMPR	
	*Label, "Serial/Model, Made in USA, 100V"	36-27329-01		ACEG	
				JLNQ	
	*Label, "Serial/Model Made in UK, 100V"	36-27329-02		ACEG	
				JLNQ	
	*Label, "Serial/Model Made in USA, 220V"	36-27329-03		BDFH	
				KMPR	

FIG.& ITEM NO.	DESCRIPTION	DEC PART NO.	ECO CUT-IN 640QS 00000	USED ON CODE	REF FIG NO.
1-	*Label, "Serial/Model Made in UK, 220V" *Label, "Pedestal, USA, 100V" *Label, "Pedestal, UK, 220V" *Label, "Pedestal, UK, 100V" *Label, "Pedestal, USA 220V" *Label, "Caution S-Box Shipping" *Label, "VAXserver 3400" *Label, "MicroVAX 3400" *Label, "rtVAX 3400" Label, "FTZ Postcard" (added) Label, "M7624-CA" (added) Label, "M7624-DA" (added) Label, "MicroVAX 3400" (Japan) (added) Guide, "Instalation MicroVAX" (added) Label, "Pre Installed Software" (added) Label, "BA2XX Rev Rolled"	36-27329-04 36-27838-01 36-27838-03 36-27838-04 36-27838-02 36-27924-01 36-27354-19 36-27354-18 36-27354-23 36-30422-04 36-26883-97 36-26883-98 36-32180-05 EK-176AA-RC 36-28979-01 36-29163-07	00001 00001 00001 00002 00003 00004	BDFH KMPR CL DM CL DM JKN-R AB E-H JK N-R BDFH KMPR A-H J-R ACEG JLNQ	



640QS-02-SC

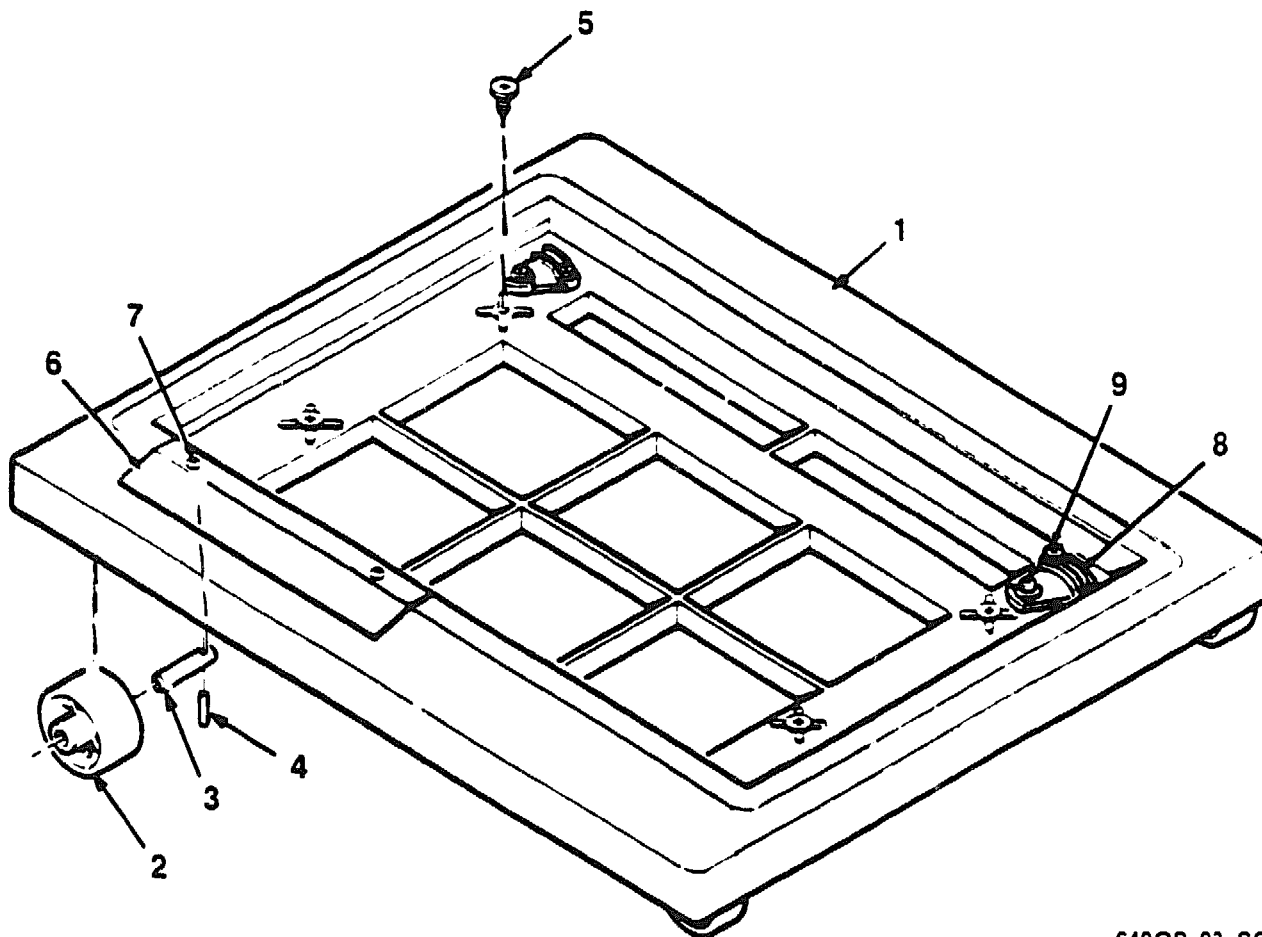
Figure 2. Module Assembly, H3602 Bulkhead

PARTS LIST



FIG. & ITEM NO.	DESCRIPTION	DEC PART NO.	H ECO CUT-IN 70-25775 00000	USED ON CODE	REF FIG NO.
2-	MODULE ASSEMBLY, H3602 BULKHEAD	70-25775-01			1
1	*Bulkhead Assembly, Front Dual (Replaces 70-23982-09)	70-23982-14	00004		
2	*Module, SLU Console (Replaces 54-17381-01)	54-17381-03	00004		
3	*Latch Assembly, 15 Pin, Slide w/o Hardware	12-18489-03			
4	*Cable Assembly, 40 Cond Flat	17-01032-03	00004		
5	*Tape, Foam (deleted)	90-08228-00	00006		
6	*Latch Assembly, 2 Piece Slide w/Hardware (added)	12-18489-04	00006		
7	*Battery, 3 Cell, 3.75V	12-19245-01			
8	*Tape, Velcro	12-26595-02			
9	*Insulator, Shield (Replaces 74-37167-01)	74-37167-02	00004		
10	*Washer, Internal Tooth Lock No. 10 (deleted)	90-06635-00	00006		
11	*Screw, Truss Hd No. 6-32 x 5/16 (replaces 90-08404-02)	90-00063-78	00006		
12	*Bushing, Mylar (deleted)	12-20575-01	00007		
13	*Washer, BNC Internal Tooth Lock	90-00037-05			
14	*Nut, Hex No. 1/2-28	90-10563-01			
15	*Carrier, Label (deleted)	74-34429-01	00006		
16	*Screw, Thd RI No. 4-40 x 5/16	90-00063-02			
17	*Cable Assembly, 50 Cond Flat Ribbon (deleted)	17-02130-01	00007		
	LABELS (Not Shown)				
	*Label, "Baud Select"	36-26584-01			
	*Label, "Debet Ethernet Address" (deleted)	36-25542-02	00006		
	*Label, "Direct Thermal" (deleted)	36-28231-08	00006		

FIG. & ITEM NO.	DESCRIPTION	DEC PART NO.	ECO CUT-IN 70-24046 0000 ^c	USED ON CODE	REF FIG NO.
3-	BASE ASSEMBLY	70-24046-01		CDLM	1
1	*Base, Lower	74-33650-01			
2	*Wheel, Base	74-34068-01			
3	*Shaft, Wheel	74-34069-01			
4	*Pin, Roll	90-09385-00			
5	*Screw, Shoulder, Thread Rolling	12-26868-01			
6	*Support, Label	74-34846-01			
7	*Screw, Self Tap Phi Pan Hd No. 6-19 x 3/4	90-09800-06			
8	*Fastener, Turn (See Note)	74-33854-01			
9	*Screw, Sems Phi Pan Hd No. 10-32 x 5/16 (See Note)	90-09282-00			
Note: Item part of figure 1. Shown here for clarity.					



640QS-03-SC

Figure 3. Base Assembly

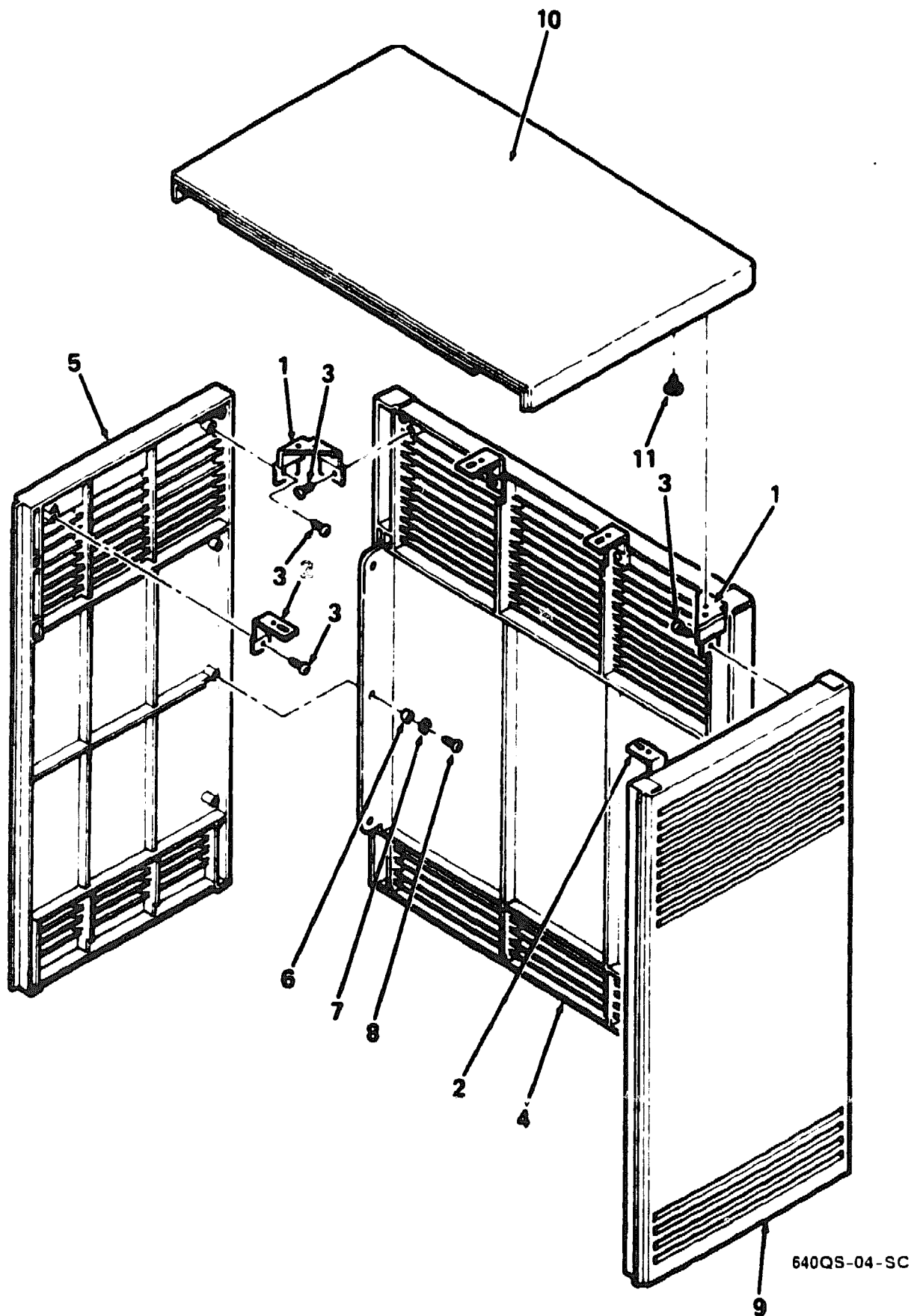


Figure 4. Enclosure Assembly, Shell

PARTS LIST

FIG. & ITEM NO.	DESCRIPTION	DEC PART NO.	E ECO CUT-IN 70-24037 00001	USED ON CODE	REF FIG NO.
4-	ENCLOSURE ASSEMBLY, SHELL	70-24037-01		CDLM	1
1	*Bracket, Corner	74-34126-01			
2	*Bracket, Side	74-34125-01			
3	*Screw, Self Tap Phi Pan Hd No. 8-16 x 3/8	90-09800-04			
4	*Panel, Rear	74-33651-01			
5	*Panel, Left Side	74-33694-01			
6	*Sleeve	74-34424-01			
7	*Washer, Flat	90-06661-00			
8	*Screw, Self Tap Phi Hd No. 8-16 x 1/2	90-09800-08			
9	*Panel, Right Side	74-33647-01			
10	*Cover, Top	74-33646-01			
11	*Screw, Thread Rolling Shoulder	12-26668-01			

15

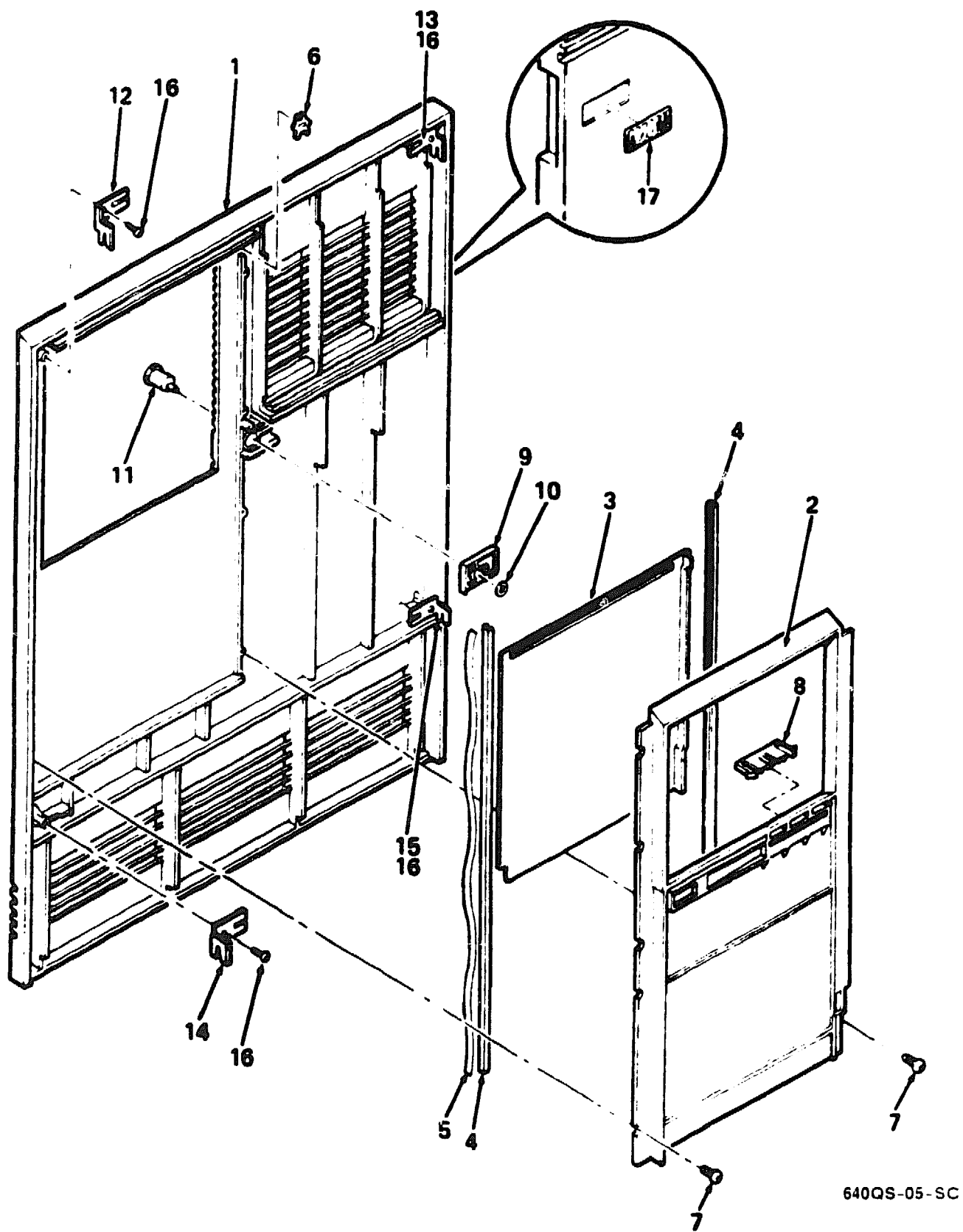


Figure 5. Panel Assembly, Front

PARTS LIST



FIG. & ITEM NO.	DESCRIPTION	DEC PART NO.	ECO CUT-IN 70-24041 00000	USED ON CODE	REF FIG NO.
5-	PANEL ASSEMBLY, FRONT	70-24041-01		CDLM	1
1	*Panel, Front	74-33048-01			
2	*Bezel, Switch	74-34067-01			
3	*Door	74-34061-01			
4	*Channel (Front Panel)	74-34062-01			
5	*Spring, Channel	74-34066-01			
6	*Stop, Door Position	74-34363-01			
7	*Screw, Phi Pan Hd No. 6-19 x 3/8	90-09800-06			
8	*Latch, Pull	74-34064-01			
9	*Latch, Slide	74-34065-01			
10	*Ring, Retainer	90-09257-05			
11	*Tumbler	74-34063-01			
12	*Bracket, Top Right Hand	74-34123-01			
13	*Bracket, Top Left Hand	74-34123-02			
14	*Bracket, Bottom Right Hand	74-34124-01			
15	*Bracket, Bottom Left Hand	74-34124-02			
16	*Screw, Self Tap Phi Pan Hd No. 8-16 x 3/8	90-09800-04			
17	*Logo	74-34426-01			
					Ω

PART NUMBER/DESCRIPTION INDEX



INDEX BY DEC PART NUMBER **640QS PEDESTAL SYSTEM**

PART NO.	DESCRIPTION	FIG NO.	ITEM NO.
12-17119-01	Key, Plastic	1	Not Shown
12-18489-03	Latch Assembly, 15 Pin, Slide w/o Hardware	2	3
12-18489-04	Latch Assembly, 2 Piece Slide w/Hardware (added)	2	6
12-19245-01	Battery, 3 Cell, 3.75V	2	7
12-20575-01	Bushing, Mylar (deleted)	2	12
12-23599-01	Connector, 25-Position to 6-Position Adapter	1	Not Shown
12-25869-01	Tee, BNC Coaxial	1	Not Shown
12-26318-01	Connector, BNC Coaxial	1	Not Shown
12-26595-02	Tape, Velcro	2	8
12-26868-01	Screw, Thread Rolling Shoulder	4	11
12-26868-01	Screw, Shoulder, Thread Rolling	3	5
12-28766-19	Lens Encoder Set	1	35
12-29258-01	Connector, Terminator	1	37
17-00083-43	Cord, Power	1	10
17-00811-03	Cable Assembly, 06 Conductor	1	Not Shown
17-01032-03	Cable Assembly, 40 Cond Flat	2	4
17-01364-02	Cable Assembly, 06 Conductor	1	Not Shown
17-01836-01	Cable Assembly, Flat Ribbon, 50-Pin Daisy Chain	1	26
17-01898-01	Cable, Flat Ribbon, 50 Cond, 3 Connector	1	36
17-01898-02	Cable, Flat Ribbon, 50 Cond, 4 Connector	1	36
17-01937-01	Cable Assembly, TK Power 5-Pin to 4-Pin (Connects to Tape Drive)	1	29
17-01964-01	Cable Assembly, Flat Ribbon, 10 Conductor	1	28
17-01989-01	Harness Assembly, Left Power	1	25
17-01990-01	Harness Assembly, Right Power	1	24
17-02059-01	Cable Assembly, Round, 50 Conductor	1	27
17-02130-01	Cable Assembly, 50 Cond Flat Ribbon (deleted)	2	17
36-17905-16	Label, "Warning Equipment Rating 100-120V"	1	Not Shown
36-17905-17	Label, "Warning Equipment Rating 220-220V"	1	Not Shown
36-25542-02	Label, "Debat Ethernet Address" (deleted)	2	Not Shown
36-26584-01	Label, "Baud Select"	2	Not Shown
36-26883-18	Label, "Module Numbers"	1	Not Shown
36-26883-55	Label, "Module Number, M7624-AA" (deleted)	1	Not Shown
36-26883-69	Label, "Module Number, KA640-BA" (deleted)	1	Not Shown
36-26883-97	Label, "M7624-CA" (added)	1	Not Shown
36-26883-98	Label, "M7624-DA" (added)	1	Not Shown
36-27329-01	Label, "Serial/Model, Made in USA, 100V"	1	Not Shown
36-27329-02	Label, "Serial/Model Made in UK, 100V"	1	Not Shown
36-27329-03	Label, "Serial/Model Made in USA, 220V"	1	Not Shown
36-27329-04	Label, "Serial/Model Made in UK, 220V"	1	Not Shown
36-27354-18	Label, "MicroVAX 3400"	1	Not Shown
36-27354-19	Label, "VAXserver 3400"	1	Not Shown
36-27354-23	Label, "rtVAX 3400"	1	Not Shown
36-27838-01	Label, "Pedestal, USA, 100V"	1	Not Shown
36-27838-02	Label, "Pedestal, USA 220V"	1	Not Shown
36-27838-03	Label, "Pedestal, UK, 220V"	1	Not Shown
36-27838-04	Label, "Pedestal, UK, 100V"	1	Not Shown

INDEX BY DEC PART NUMBER
640QS PEDESTAL SYSTEM

PART NO.	DESCRIPTION	FIG NO.	ITEM NO.
36-27923-01	Label, "S-Box, Module Utilization"	1	Not Shown
36-27923-02	Label, "S-Box, Module Utilization"	1	Not Shown
36-27924-01	Label, "Caution S-Box Shipping"	1	Not Shown
36-28231-08	Label, "Direct Thermal" (deleted)	2	Not Shown
36-28979-01	Label, "Pre Installed Software" (added)	1	Not Shown
36-29163-07	Label, "BA2XX Rev Rolled"	1	Not Shown
36-29164-07	Label, "BA2XX Rev"	1	Not Shown
36-29341-01	Label, "Control Panel"	1	20
36-30422-04	Label, "FTZ Postcard" (added)	1	Not Shown
36-33180-05	Label, "MicroVAX 3400" (Japan) (added)	1	Not Shown
47-00042-00	Screwdriver, Flat Blade	1	Not Shown
54-17381-03	Module, SLU Console (Replaces 54-17381-01)	2	2
70-23981-01	Bulkhead Assembly, Front	1	8
70-23982-02	Bulkhead Assembly, Front Dual	1	7
70-23982-14	Bulkhead Assembly, Front Dual (Replaces 70-23982-09)	2	1
70-24037-01	ENCLOSURE ASSEMBLY, SHELL	4	N/A
70-24037-01	ENCLOSURE ASSEMBLY, SHELL	1	16
70-24041-01	PANEL ASSEMBLY, FRONT	5	N/A
70-24041-01	PANEL ASSEMBLY, FRONT	1	17
70-24046-01	BASE ASSEMBLY	1	11
70-24046-01	BASE ASSEMBLY	3	N/A
70-24071-01	Panel Assembly, Gap Filler	1	9
70-24227-03	BA213 UNIT ASSEMBLY 120V (2 P.S.)	1	1
70-24227-04	BA213 UNIT ASSEMBLY 240V (2 P.S.)	1	1
70-24263-01	Hardware, Wall Mount	1	Not Shown
70-24263-02	Hardware, Rack Mount	1	Not Shown
70-25452-03	Shock Assembly, Top	1	30
70-25452-04	Shock Assembly, Bottom	1	31
70-25750-01	Panel Assembly, Front (DSSI)	1	19
70-25752-01	OCP Assembly	1	21
70-25760-01	KIT, ACCESSORY	1	Not Shown
70-25760-02	KIT, ACCESSORY	1	Not Shown
70-25760-03	KIT, ACCESSORY	1	Not Shown
70-25760-04	KIT, ACCESSORY	1	Not Shown
70-25775-01	MODULE ASSEMBLY, H3602 BULKHEAD	2	N/A
70-25775-01	MODULE ASSEMBLY, H3602 BULKHEAD	1	2
70-26206-01	Plate Assembly, Connector	1	22
74-24505-01	Kit, Bulkhead Panel	1	Not Shown
74-24505-02	Kit, Bulkhead Panel	1	Not Shown
74-33507-01	Panel, Blank Dual	1	Not Shown
74-33646-01	Cover, Top	4	10
74-33647-01	Panel, Right Side	4	9
74-33648-01	Panel, Front	5	1
74-33650-01	Base, Lower	3	1
74-33651-01	Panel, Rear	4	4
74-33694-01	Panel, Left Side	4	5

INDEX BY DEC PART NUMBER
640QS PEDESTAL SYSTEM

PART NO.	DESCRIPTION	FIG NO.	ITEM NO.
74-33854-01	Fastener, Turn	1	15
74-33854-01	Fastener, Turn	3	8
74-34061-01	Door	5	3
74-34062-01	Channel (Front Panel)	5	4
74-34063-01	Tumbler	5	11
74-34064-01	Latch, Pull	5	8
74-34065-01	Latch, Slide	5	9
74-34066-01	Spring, Channel	5	5
74-34067-01	Bezel, Switch	5	2
74-34068-01	Wheel, Base	3	2
74-34069-01	Shaft, Wheel	3	3
74-34123-01	Bracket, Top Right Hand	5	12
74-34123-02	Bracket, Top Left Hand	5	13
74-34124-01	Bracket, Bottom Right Hand	5	14
74-34124-02	Bracket, Bottom Left Hand	5	15
74-34125-01	Bracket, Side	4	2
74-34126-01	Bracket, Corner	4	1
74-34363-01	Stop, Door Position	5	6
74-34424-01	Sleeve	4	6
74-34425-16	Nameplate, MicroVAX 3400	1	18
74-34425-17	Nameplate, VAXserver 3400	1	18
74-34425-22	Nameplate, rtVAX 3400	1	18
74-34426-01	Logo	5	17
74-34429-01	Carrier, Label (deleted)	2	15
74-34432-01	Bracket, Wall Mount	1	Not Shown
74-34638-01	Support, Mounting	1	Not Shown
74-34846-01	Support, Label	3	6
74-35417-01	Frame, Switch	1	5
74-36425-01	Filler, Tape Drive	1	32
74-37167-02	Insulator, Shield (Replaces 74-37167-01)	2	9
90-00337-05	Washer, BNC Internal Tooth Lock	2	13
90-00063-02	Screw, Thd RI No. 4-40 x 5/16	2	16
90-00063-78	Screw, Truss Hd No. 6-32 x 5/16 (Replaces 90-08404-02)	2	11
90-06635-00	Washer, Internal Tooth Lock No. 10 (deleted)	2	10
90-06661-00	Washer, Flat	1	13
90-06661-00	Washer, Flat	4	7
90-07064-00	Plug, Button	1	6
90-07786-00	U-Nut, Retainer	1	Not Shown
90-08228-00	Tape, Foam (deleted)	2	5
90-09228-10	Screw, Sems Phi Pan Hd No. 10-32 x 3/8	1	Not Shown
90-09257-05	Ring, Retainer	5	10
90-09282-00	Screw, Sems Phi Pan Hd No. 10-32 x 5/16	3	9
90-09282-00	Screw, Sems Phi Pan Hd No. 10-32 x 15/16	1	14
90-09385-00	Pin, Roll	3	4
90-09700-00	Screw, Sems Phi Pan Hd No. 10-32 x 1/2	1	Not Shown
90-09800-04	Screw, Self Tap Phi Pan Hd No. 8-16 x 3/8	4	3
90-09800-04	Screw, Self Tap Phi Pan Hd No. 8-16 x 3/8	5	16
90-09800-06	Screw, Self Tap Phi Pan Hd No. 6-19 x 3/4	3	7
90-09800-06	Screw, Phi Pan Hd No. 6-19 x 3/8	5	7
90-09800-08	Screw, Self Tap Phi Hd No. 8-16 x 1/2	4	8
90-09800-08	Screw, Self Tap Phi Pan Hd No. 6 x 1/2	1	12
90-10563-01	Nut, Hex No. 1/2-28	2	14
90-10917-01	Screw, Mach Flat Hd (Metric) 02.5 x .08	1	23

INDEX BY DEC PART NUMBER **640QS PEDESTAL SYSTEM**

PART NO.	DESCRIPTION	FIG NO.	ITEM NO.
640QS-A2	640QS-A2 120V (w/o Skins) (TIMESHARE)	1	N/A
640QS-A3	640QS-A3 240V (w/o Skins) (TIMESHARE)	1	N/A
640QS-B2	640QS-B2 120V (w/Skins) (TIMESHARE)	1	N/A
640QS-B3	640QS-B3 240V (w/Skins) (TIMESHARE)	1	N/A
640QS-C2	640QS-C2 120V (w/o Skins, Rack Kit) (TIMESHARE)	1	N/A
640QS-C3	640QS-C3 240V (w/o Skins, Rack Kit) (TIMESHARE)	1	N/A
640QS-D2	640QS-D2 120V (w/o Skins, Wall Kit) (TIMESHARE)	1	N/A
640QS-D3	640QS-D3 240V (w/o Skins, Wall Kit) (TIMESHARE)	1	N/A
640QS-E2	640QS-E2 120V (w/o Skins) (SERVER)	1	N/A
640QS-E3	640QS-E3 240V (w/o Skins) (SERVER)	1	N/A
640QS-F2	640QS-F2 120V (w/Skins) (SERVER)	1	N/A
640QS-F3	640QS-F3 240V (w/Skins) (SERVER)	1	N/A
640QS-H2	640QS-H2 120V (w/o Skins, Rack Kit) (SERVER)	1	N/A
640QS-H3	640QS-H3 240V (w/o Skins, Rack Kit) (SERVER)	1	N/A
640QS-J2	640QS-J2 120V (w/o Skins, Wall Kit) (SERVER)	1	N/A
640QS-J3	640QS-J3 240V (w/o Skins, Wall Kit) (SERVER)	1	N/A
BA213-RA	KIT, RACK MOUNT KIT BA213 LARGE S-BOX	1	Not Shown
BA213-WA	KIT, WALL MOUNT BA213 LARGE S-BOX	1	Not Shown
EK-176AA-RC	Guide, "Installation MicroVAX" (added)	1	Not Shown
EK-BA200-IN	Guide, Rack Mount Installation	1	Not Shown
EK-BA200-IN	Guide, Wall Mount Installation	1	Not Shown
M7624-CA	Module, Mayfair II CPU (Replaces M7624-AA)	1	3
M7624-DA	Module, Mayfair II CPU (Replaces M7624-BA)	1	4
M9047-00	Card, Q-Bus Grant Continuity	1	Not Shown
M9047-SA	Kit, Q-Bus Grant CONTINUITY	1	Not Shown
M9060-YA	Module, Load	1	34
N/A	640QS PEDESTAL SYSTEM	1	N/A
TKXX-XX	Drive, TKXX Tape	1	33

22

INDEX BY DEC PART DESCRIPTION **640QS PEDESTAL SYSTEM**

DESCRIPTION	DEC PART NO.	FIG. NO.	ITEM NO.
640QS PEDESTAL SYSTEM	N/A	1	N/A
640QS-A2 120V (w/o Skins) (TIMESHARE)	640QS-A2	1	N/A
640QS-A3 240V (w/o Skins) (TIMESHARE)	640QS-A3	1	N/A
640QS-B2 120V (w/Skins) (TIMESHARE)	640QS-B2	1	N/A
640QS-B3 240V (w/Skins) (TIMESHARE)	640QS-B3	1	N/A
640QS-C2 120V (w/o Skins, Rack Kit) (TIMESHARE)	640QS-C2	1	N/A
640QS-C3 240V (w/o Skins, Rack Kit) (TIMESHARE)	640QS-C3	1	N/A
640QS-D2 120V (w/o Skins, Wall Kit) (TIMESHARE)	640QS-D2	1	N/A
640QS-D3 240V (w/o Skins, Wall Kit) (TIMESHARE)	640QS-D3	1	N/A
640QS-E2 120V (w/o Skins) (SERVER)	640QS-E2	1	N/A
640QS-E3 240V (w/o Skins) (SERVER)	640QS-E3	1	N/A
640QS-F2 120V (w/Skins) (SERVER)	640QS-F2	1	N/A
640QS-F3 240V (w/Skins) (SERVER)	640QS-F3	1	N/A
640QS-H2 120V (w/o Skins, Rack Kit) (SERVER)	640QS-H2	1	N/A
640QS-H3 240V (w/o Skins, Rack Kit) (SERVER)	640QS-H3	1	N/A
640QS-J2 120V (w/o Skins, Wall Kit) (SERVER)	640QS-J2	1	N/A
640QS-J3 240V (w/o Skins, Wall Kit) (SERVER)	640QS-J3	1	N/A
BA213 UNIT ASSEMBLY 120V (2 P.S.)	70-24227-03	1	1
BA213 UNIT ASSEMBLY 240V (2 P.S.)	70-24227-04	1	1
BASE ASSEMBLY	70-24046-01	1	11
BASE ASSEMBLY	70-24046-01	3	N/A
Base, Lower	74-33650-01	3	1
Battery, 3 Cell, 3.75V	12-19245-01	2	7
Bezel, Switch	74-34067-01	5	2
Bracket, Bottom Left Hand	74-34124-02	5	15
Bracket, Bottom Right Hand	74-34124-01	5	14
Bracket, Corner	74-34126-01	4	1
Bracket, Side	74-34125-01	4	2
Bracket, Top Left Hand	74-34123-02	5	13
Bracket, Top Right Hand	74-34123-01	5	12
Bracket, Wall Mount	74-34432-01	1	Not Shown
Bulkhead Assembly, Front	70-23981-01	1	8
Bulkhead Assembly, Front Dual	70-23982-02	1	7
Bulkhead Assembly, Front Dual (Replaces 70-23982-09)	70-23982-14	2	1
Bushing, Mylar (deleted)	12-20575-01	2	12
Cable Assembly, 06 Conductor	17-01364-02	1	Not Shown
Cable Assembly, 06 Conductor	17-00811-03	1	Not Shown
Cable Assembly, 40 Cond Flat	17-01032-03	2	4
Cable Assembly, 50 Cond Flat Ribbon (deleted)	17-02130-01	2	17
Cable Assembly, Flat Ribbon, 10 Conductor	17-01964-01	1	28
Cable Assembly, Flat Ribbon, 50-Pin Daisy Chain	17-01836-01	1	26
Cable Assembly, Round, 50 Conductor	17-02059-01	1	27
Cable Assembly, TK Power 5-Pin to 4-Pin (Connects to Tape Drive)	17-01937-01	1	29
Cable, Flat Ribbon, 50 Cond, 3 Connector	17-01898-01	1	36
Cable, Flat Ribbon, 50 Cond, 4 Connector	17-01898-02	1	36
Card, Q-Bus Grant Continuity	M9047-00	1	Not Shown
Carrier, Label (deleted)	74-34429-01	2	15
Channel (Front Panel)	74-34062-01	5	4
Connector, 25-Position to 6-Position Adapter	12-23599-01	1	Not Shown
Connector, BNC Coaxial	12-26318-01	1	Not Shown
Connector, Terminator	12-29258-01	1	37
Cord, Power	17-00083-43	1	10
Cover, Top	74-33646-01	4	10

**INDEX BY DEC PART DESCRIPTION
640QS PEDESTAL SYSTEM**

DESCRIPTION	DEC PART NO.	FIG. NO.	ITEM NO.
Door	74-34061-01	5	3
Drive, TKXX Tape	TKXX-XX	1	33
ENCLOSURE ASSEMBLY, SHELL	70-24037-01	1	16
ENCLOSURE ASSEMBLY, SHELL	70-24037-01	4	N/A
Fastener, Turn	74-33854-01	1	15
Fastener, Turn	74-33854-01	3	8
Filler, Tape Drive	74-38425-01	1	32
Frame, Switch	74-35417-01	1	5
Guide, "Installation MicroVAX" (added)	EK-176AA-RC	1	Not Shown
Guide, Rack Mount Installation	EK-BA200-IN	1	Not Shown
Guide, Wall Mount Installation	EK-BA200-IN	1	Not Shown
Hardware, Rack Mount	70-24283-02	1	Not Shown
Hardware, Wall Mount	70-24283-01	1	Not Shown
Harness Assembly, Left Power	17-01989-01	1	25
Harness Assembly, Right Power	17-01990-01	1	24
Insulator, Shield (Replaces 74-37167-01)	74-37167-02	2	9
Key, Plastic	12-17119-01	1	Not Shown
KIT, ACCESSORY	70-25760-04	1	Not Shown
KIT, ACCESSORY	70-25760-01	1	Not Shown
KIT, ACCESSORY	70-25760-02	1	Not Shown
KIT, ACCESSORY	70-25760-03	1	Not Shown
Kit, Bulkhead Panel	74-24505-01	1	Not Shown
Kit, Bulkhead Panel	74-24505-02	1	Not Shown
Kit, Q-Bus Grant CONTINUITY	M9047-SA	1	Not Shown
KIT, RACK MOUNT KIT BA213 LARGE S-BOX	BA213-RA	1	Not Shown
KIT, WALL MOUNT BA213 LARGE S-BOX	BA213-WA	1	Not Shown
Label, "BA2XX Rev Rolled"	36-29163-07	1	Not Shown
Label, "BA2XX Rev"	36-29164-07	1	Not Shown
Label, "Baud Select"	36-26584-01	2	Not Shown
Label, "Caution S-Box Shipping"	36-27924-01	1	Not Shown
Label, "Control Panel"	36-29341-01	1	20
Label, "Debet Ethernet Address" (deleted)	36-25542-02	2	Not Shown
Label, "Direct Thermal" (deleted)	36-28231-08	2	Not Shown
Label, "FTZ Postcard" (added)	36-30422-04	1	Not Shown
Label, "M7624-CA" (added)	36-26883-97	1	Not Shown
Label, "M7624-DA" (added)	36-26883-98	1	Not Shown
Label, "MicroVAX 3400"	36-27354-18	1	Not Shown
Label, "MicroVAX 3400" (Japan) (added)	36-33180-05	1	Not Shown
Label, "Module Number, KA640-BA" (deleted)	36-26883-69	1	Not Shown
Label, "Module Number, M7624-AA" (deleted)	36-26883-55	1	Not Shown
Label, "Module Numbers"	36-26883-18	1	Not Shown
Label, "Pedestal, UK, 100V"	36-27838-04	1	Not Shown
Label, "Pedestal, UK, 220V"	36-27838-03	1	Not Shown
Label, "Pedestal, USA 220V"	36-27838-02	1	Not Shown
Label, "Pedestal, USA, 100V"	36-27838-01	1	Not Shown
Label, "Pre Installed Software" (added)	36-28979-01	1	Not Shown
Label, "rtVAX 3400"	36-27354-23	1	Not Shown
Label, "S-Box, Module Utilization"	36-27923-01	1	Not Shown
Label, "S-Box, Module Utilization"	36-27923-02	1	Not Shown

INDEX BY DEC PART DESCRIPTION **640QS PEDESTAL SYSTEM**

DESCRIPTION	DEC PART NO.	FIG. NO.	ITEM NO.
Label, "Serial/Model Made in UK, 100V"	36-27329-02	1	Not Shown
Label, "Serial/Model Made in UK, 220V"	36-27329-04	1	Not Shown
Label, "Serial/Model Made in USA, 220V"	36-27329-03	1	Not Shown
Label, "Serial/Model, Made in USA, 100V"	36-27329-01	1	Not Shown
Label, "VAXserver 3400"	36-27354-19	1	Not Shown
Label, "Warning Equipment Rating 100-120V"	36-17905-16	1	Not Shown
Label, "Warning Equipment Rating 220-220V"	36-17905-17	1	Not Shown
Latch Assembly, 15 Pin, Slide w/o Hardware	12-18489-03	2	3
Latch Assembly, 2 Piece Slide w/Hardware (added)	12-18489-04	2	6
Latch, Pull	74-34084-01	5	8
Latch, Slide	74-34085-01	5	9
Lens Encoder Set	12-28786-19	1	35
Logo	74-34426-01	5	17
 MODULE ASSEMBLY, H3602 BULKHEAD	 70-25775-01	 1	 2
MODULE ASSEMBLY, H3602 BULKHEAD	70-25775-01	2	N/A
Module, Load	M9060-YA	1	34
Module, Mayfair II CPU (Replaces M7624-AA)	M7624-CA	1	3
Module, Mayfair II CPU (Replaces M7624-BA)	M7624-DA	1	4
Module, SLU Console (Replaces 54-17381-01)	54-17381-03	2	2
 Nameplate, MicroVAX 3400	 74-34425-16	 1	 18
Nameplate, rtVAX 3400	74-34425-22	1	18
Nameplate, VAXserver 3400	74-34425-17	1	18
Nut, Hex No. 1/2-28	90-10563-01	2	14
 OCP Assembly	 70-25752-01	 1	 21
 PANEL ASSEMBLY, FRONT	 70-24041-01	 5	 N/A
PANEL ASSEMBLY, FRONT	70-24041-01	1	17
Panel Assembly, Front (DSSI)	70-25750-01	1	19
Panel Assembly, Gap Filler	70-24071-01	1	9
Panel, Blank Dual	74-33507-01	1	Not Shown
Panel, Front	74-33648-01	5	1
Panel, Left Side	74-33694-01	4	5
Panel, Rear	74-33651-01	4	4
Panel, Right Side	74-33647-01	4	9
Pin, Roll	90-09385-00	3	4
Plate Assembly, Connector	70-26206-01	1	22
Plug, Button	90-07064-00	1	6
 Ring, Retainer	 90-09257-05	 5	 10
 Screw, Phi Pan Hd No. 6-19 x 3/8	 90-09800-06	 5	 7
Screw, Self Tap Phi Hd No. 8-16 x 1/2	90-09800-08	4	8
Screw, Self Tap Phi Pan Hd No. 6 x 1/2	90-09800-08	1	12
Screw, Self Tap Phi Pan Hd No. 6-19 x 3/4	90-09800-06	3	7
Screw, Self Tap Phi Pan Hd No. 8-16 x 3/8	90-09800-04	4	3
Screw, Self Tap Phi Pan Hd No. 8-16 x 3/8	90-09800-04	5	16
Screw, Sems Phi Pan Hd No. 10-32 x 15/16	90-09282-00	1	14
Screw, Sems Phi Pan Hd No. 10-32 x 3/8	90-09228-10	1	Not Shown
Screw, Sems Phi Pan Hd No. 10-32 x 5/16	90-09282-00	3	9
Screw, Shoulder, Thread Rolling	12-26868-01	3	5
Screw, Thd RI No. 4-40 x 5/16	90-00063-02	2	16
Screw, Thread Rolling Shoulder	12-26868-01	4	11
Screw, Truss Hd No. 6-32 x 5/16 (Replaces 90-08404-02)	90-00063-78	2	11

INDEX BY DEC PART DESCRIPTION

640QS PEDESTAL SYSTEM

DESCRIPTION	DEC PART NO.	FIG. NO.	ITEM NO.
Screw, Mach Flat Hd (Metric) 02.5 x .08	90-10917-01	1	23
Screw, Sems Phi Pan Hd No.10-32 x 1/2	90-09700-00	1	Not Shown
Screwdriver, Flat Blade	47-00042-00	1	Not Shown
Shaft, Wheel	74-34069-01	3	3
Shock Assembly, Bottom	70-25452-04	1	31
Shock Assembly, Top	70-25452-03	1	30
Sleeve	74-34424-01	4	6
Spring, Channel	74-34086-01	5	5
Stop, Door Position	74-34363-01	5	6
Support, Label	74-34846-01	3	6
Support, Mounting	74-34638-01	1	Not Shown
Tape, Foam (deleted)	90-08228-00	2	5
Tape, Velcro	12-26595-02	2	8
Tee, BNC Coaxial	12-25869-01	1	Not Shown
Tumbler	74-34063-01	5	11
U-Nut, Retainer	90-07786-00	1	Not Shown
Washer, BNC Internal Tooth Lock	90-00037-05	2	13
Washer, Flat	90-06661-00	4	7
Washer, Flat	90-06661-00	1	13
Washer, Internal Tooth Lock No. 10 (deleted)	90-06635-00	2	10
Wheel, Base	74-34068-01	3	2